



ORIENT

深圳市奥伦德科技有限公司

样品规格书

Specification sheet

品 名(P/N): 光电耦合器 Photocoupler
客户名称(Customer): _____
本厂型号(Mfg P/N): ORPC-817S
日 期(Date): _____

深圳市奥伦德科技有限公司
Shenzhen Orient Components Co., Ltd.
深圳市光明新区光明同富裕工业区 3 栋 1 楼
1/F, Block 3, Guang Ming Tong Fuyu Industrial
Park, Guang Ming New District, Shenzhen
Tel: 86-755-29681816
Fax: 86-755-29681200
www.orient-opto.com

| 审核 | 制表 |
|----|----|
| | |



● 特点 Features:

- 1: 电流转换比(CTR: 最小. 50%工作条件 IF=5mA, VCE=5V)
Current conversion ratio (Min 50% Working condition IF=5mA, VCE=5V)
- 2: 绝缘电压 : (VISO=5,000Vrms)
Insulation Voltage: (VISO=5,000Vrms)
- 3: 响应时间 (tr: TYP. 4 μ s 工作条件 VCE=2V, IC=2mA, RL=100 Ω)
Response Time (tr: TYP. 4 μ s working condition VCE=2V, IC=2mA, RL=100 Ω)
- 4: CE 认证 (AC/0431008)
CQC 认证 (CQC09001029446)
UL 认证 (E323844)

● 说明 Instructions:

- 1: ORPC-817S 系列光耦合器的组成是 : 由一个 GaAs 的发射管和一个 NPN 的晶体管组成
ORPC-817S photocoupler consist of one piece of GaAs emitter and one piece of NPN transistor
- 2: ORPC-817S 的 BIN 脚宽是 2.54mm
BIN width of ORPC-817S is 2.54mm

● 应用范围 Application range:

- 1. 电脑. computer
- 2. 器具的应用, 测量机. Instrumental application, measurement machine
- 3. 贮存器, 复印机, 自动售货机. Imbursement equipments, duplicating machine, automat
- 4. 家用电器, 如风扇等. Family-use electric equipments, such as fans
- 5. 信号传输系统. Signal transforming systems

● 最大绝对额定值 (常温=25 $^{\circ}$ C)

Max Absolute rated value (Normal Temperature=25 $^{\circ}$ C)

| 参数 Parameter | | 符号 Sign | 额定值 Rated value | 单位 Unit |
|---|--|------------|--------------------|--------------|
| 输入 input | 正向电流 Forward Current | IF | 50 | mA |
| | 反向电压 Reverse Voltage | VR | 6 | V |
| | 消耗功率 Consume Power | P | 70 | mW |
| 输出 output | 集极与射极电压 Collector and emitter Voltage | VCEO | 35 | V |
| | 射极与集极电压 Emitter and collector Voltage | VECO | 6 | |
| | 集极电流 Collector Current | IC | 50 | mA |
| | 消耗功率 Consume Power | PC | 150 | mW |
| 总功率消耗 Total Consume Power | | Ptot | 200 | mW |
| *1 绝缘电压 Insulation Voltage | | Viso | 5,000 | Vrms |
| 最大绝缘电压 Max Insulation Voltage | | VIOTM | 6,000 | V |
| 额定脉冲绝缘电压 Rated Impulse Insulation Voltage | | VIORM | 630 | V |
| 工作温度 Working Temperature | | Topr | -30 to + 100 | $^{\circ}$ C |
| 存贮温度 Deposit Temperature | | Tstg | -55 to + 125 | |
| *2 焊锡温度 Soldering Temperature | | Tsol | 260 | |

- *1. 交流测试, 时间 1 分钟, 湿度. =40~60%
AC Test, 1 minute, humidity = 40~60%
如下是绝缘测试的方法.
Insulation test method as below:



- (1) 将产品的两端短路。
Short circuit both terminals of photocoupler
- (2) 测试绝缘电压时无电流通过。
No Current when testing insulation voltage
- (3) 测试时加正弦波形电压。
Adding sine wave voltage when testing

*2. 锡焊时间为 10 秒

soldering time is 10 seconds

● 光电特性(常温=25°C)

Opto-electronic characteristics (Normal Temperature=25°C)

| 参数 Parameter | | 符号 sign | 条件 Condition | 最小 Min | 中 Midium | 最大 Max | 单位 Unit |
|---|---|------------|--|--------------------|--------------------|-----------|------------|
| 输入 input | 顺向电压 Forward Current | VF | IF=20mA | --- | 1.2 | 1.4 | V |
| | 逆向电流 Reverse Voltage | IR | VR=4V | --- | --- | 10 | μ A |
| | 集极电容 Collector capacitance | Ct | V=0, f=1KHz | --- | 30 | 250 | pF |
| 输出 output | 集极至射极电流 Collector to emitter Current | ICEO | VCE=20V, IF=0 | --- | --- | 100 | nA |
| | 集极与射极衰减电压 Collector and Emitter attenuation Voltage | BVCEO | IC=0.1mA IF=0 | 35 | --- | --- | V |
| | 射极与集极衰减电压 Emitter and Collector attenuation Voltage | BVECO | IE=10 μ A IF=0 | 6 | --- | --- | V |
| 传输特性 Transforming Characteristics | 集极电流 Collector Current | Ic | IF=5mA | 2.5 | --- | 30 | mA |
| | *1 电流转换比 Current conversion ratio | CTR | VCE=5V | 50 | --- | 600 | % |
| | 集极与射极饱和电压 Collector and Emitter Saturation Voltage | VCE(sat) | IF=20mA IC= 1mA | --- | 0.1 | 0.2 | V |
| | 绝缘阻抗 Insulation Impedance | Riso | DC500V 40~60%R.H. | 5×10^{10} | 1×10^{11} | --- | Ω |
| | 电容量 capacitance | Cf | V=0, f=1MHz | --- | 0.6 | 1 | pF |
| | 转换频率 Transforming Frequency | fc | VCE=5V, IC=2mA, RL=100 Ω , -3dB | --- | 80 | --- | kHz |
| | 上升时间 Risetime | tr | VCE=2V, IC=2mA | --- | 4 | 18 | μ s |
| | 下降时间 Descend Time | tf | RL=100 Ω | --- | 3 | 18 | μ s |



*1 电流转换比= IC / IF × 100%

Current conversion Ratio=IC/IF*100%

● 电流转换比的等级分类 Grades of Current Conversion Ratio

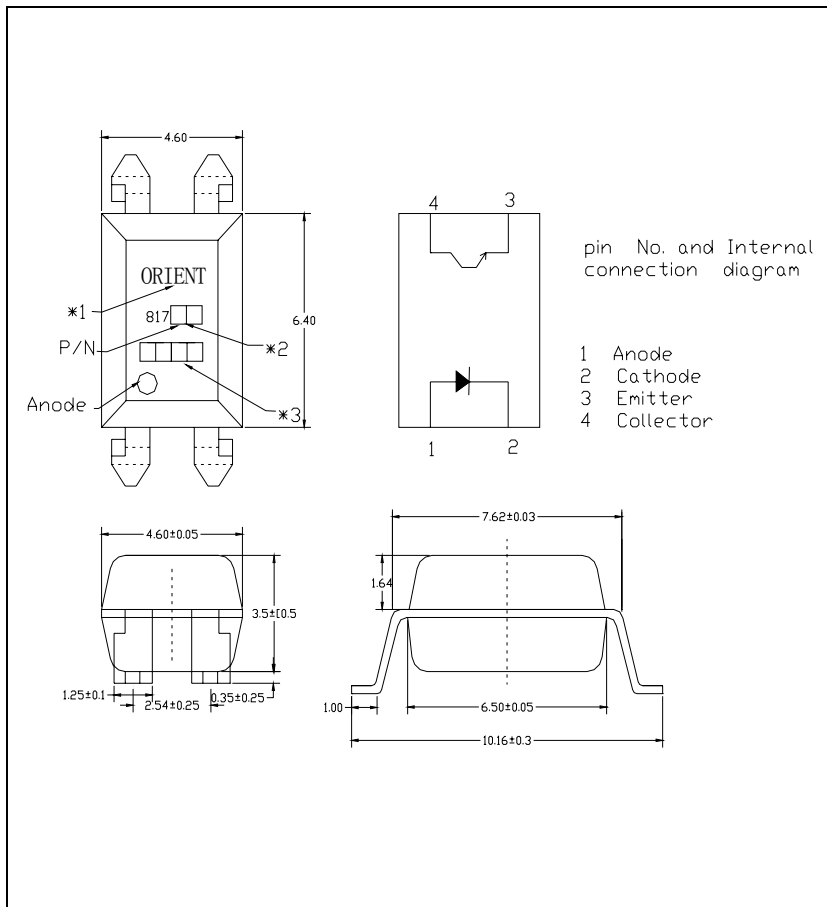
| 等级标示 Grade sign | 最小. (%) Min. | 最大. (%) Max. |
|-----------------------|-----------------|-----------------|
| L | 50 | 100 |
| A | 80 | 160 |
| B | 130 | 260 |
| C | 200 | 400 |
| D | 300 | 600 |
| L or A or B or C or D | 50 | 600 |

说明：工作条件：IF=5mA, VCE=5V, Ta=25°C.

Note: Working condition: IF=5mA, VCE=5V, Ta=25°C.

● 外形尺寸

Form size



● 注解 Note :

- *1. 公司英文名. Company name
- *2. BIN 级 BIN
- *3. 生产周期. Production period



● 特性曲线 Characteristics Curve

Fig.1 Forward Current vs. Ambient Temperature

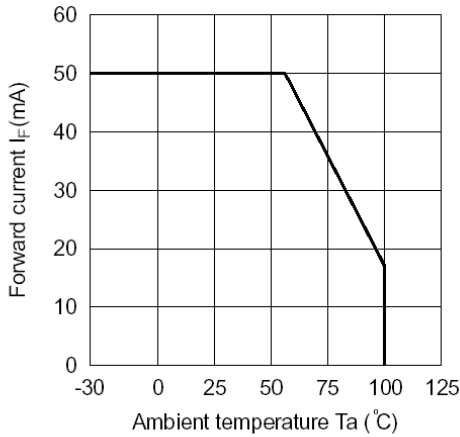


Fig.2 Collector Power Dissipation vs. Ambient Temperature

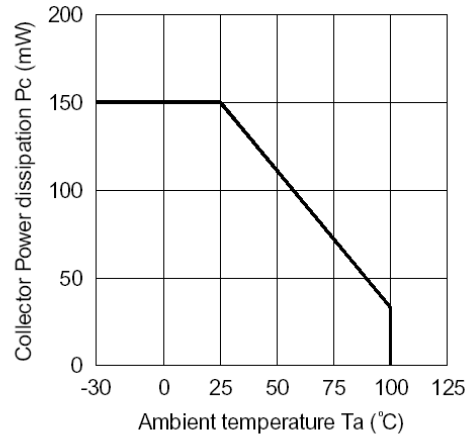


Fig.3 Collector-emitter Saturation Voltage vs. Forward Current

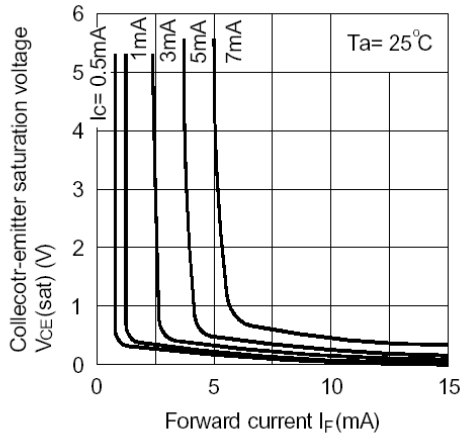


Fig.4 Forward Current vs. Forward Voltage

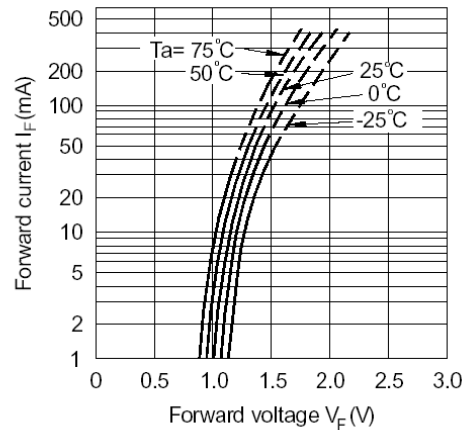


Fig.5 Current Transfer Ratio vs. Forward Current

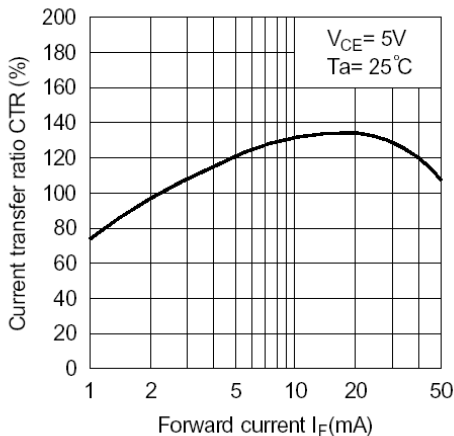
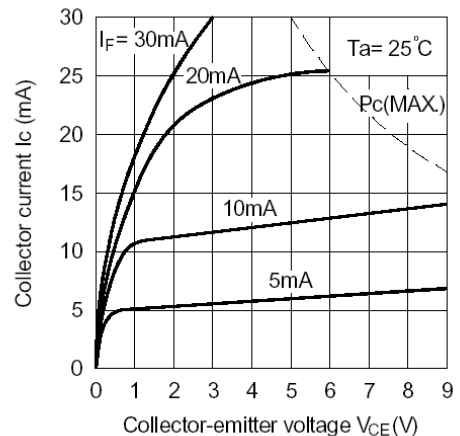


Fig.6 Collector Current vs. Collector-emitter Voltage





● 特性曲线 Characteristics Curve

Fig.7 Relative Current Transfer Ratio vs. Ambient Temperature

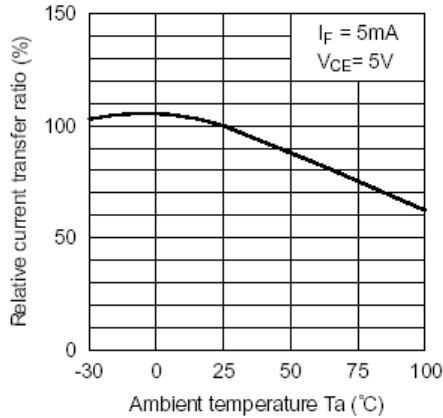


Fig.8 Collector-emitter Saturation Voltage vs. Ambient Temperature

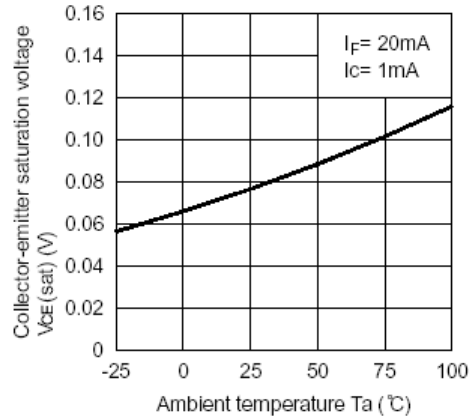


Fig.9 Collector Dark Current vs. Ambient Temperature

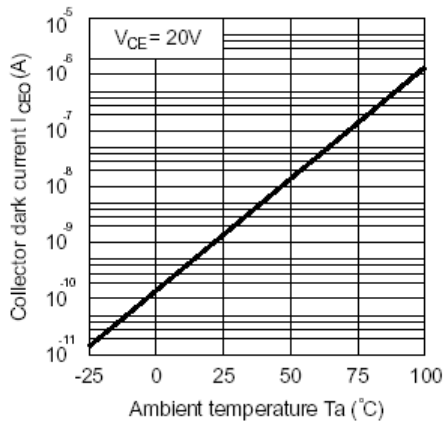


Fig.10 Response Time vs. Load Resistance

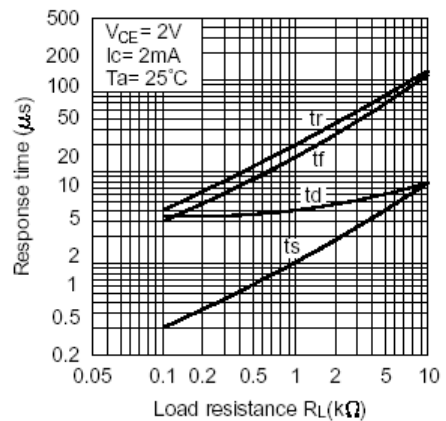
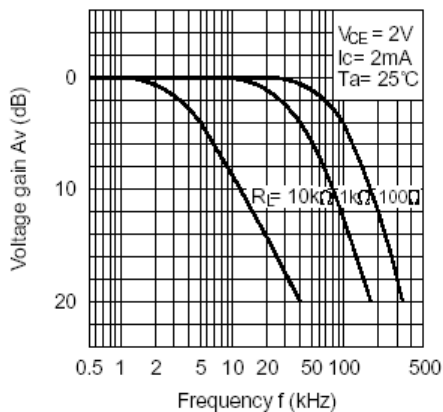
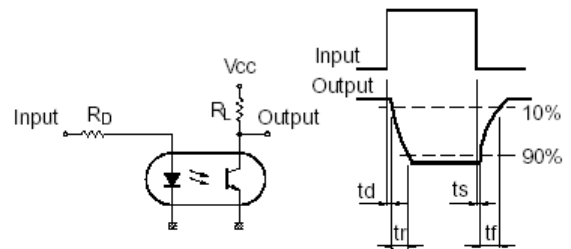


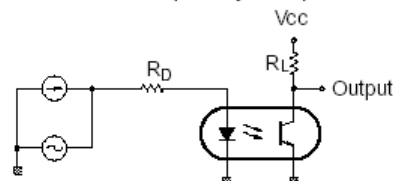
Fig.11 Frequency Response



Test Circuit for Response Time



Test Circuit for Frequency Response





深圳市奥伦德科技有限公司

ORIENT

ORPC-817S

| | | |
|---------|---------------------|------------|
| ● BVECO | IE=10 μ A, IF=0 | Over Lx1.0 |
|---------|---------------------|------------|

